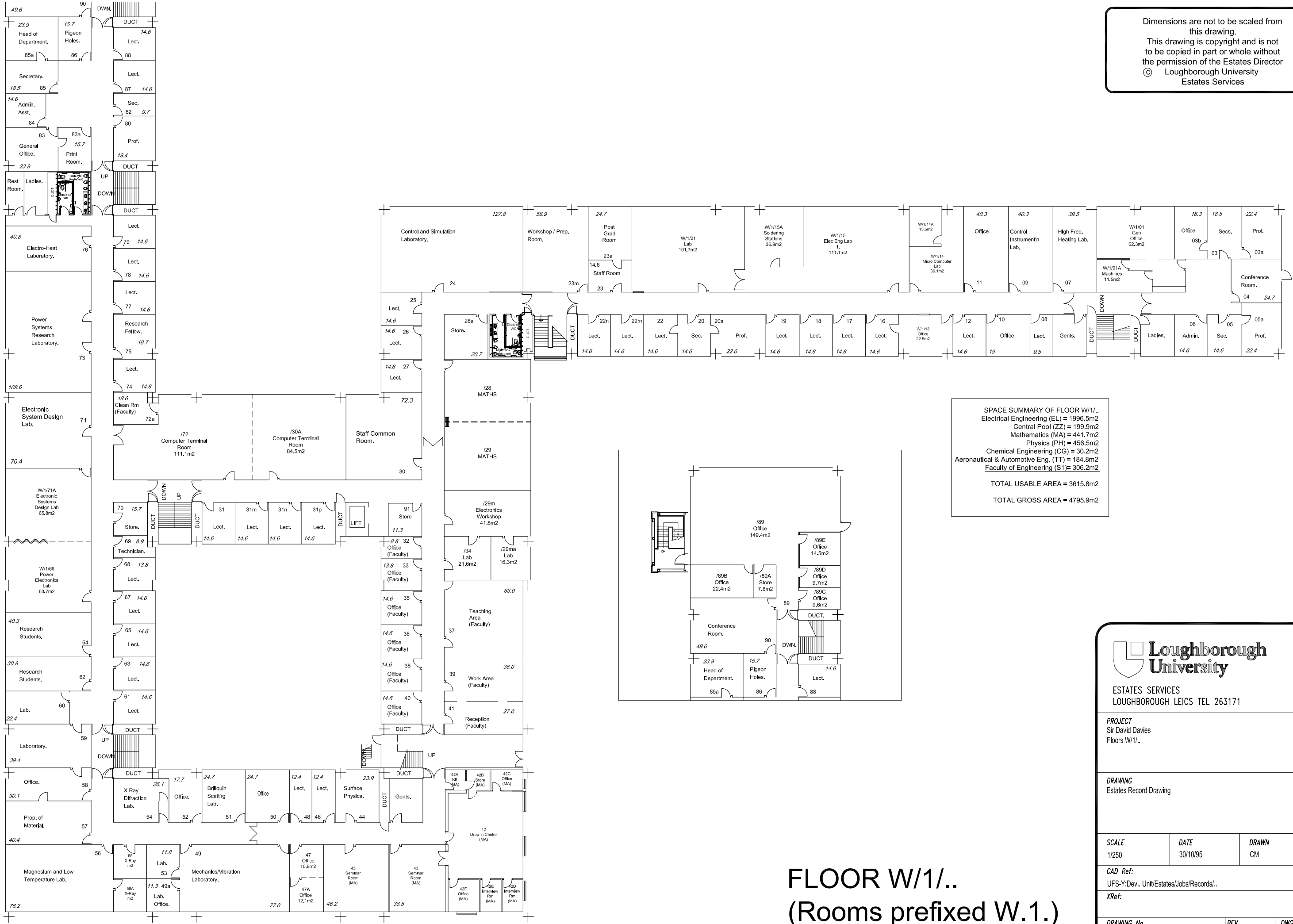
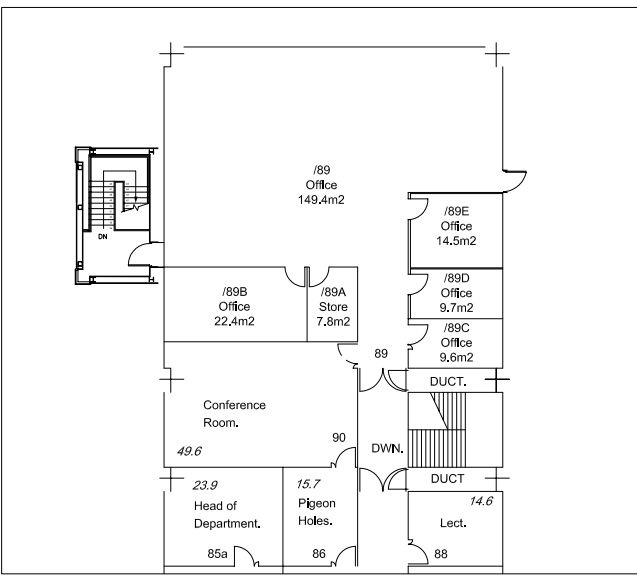


Dimensions are not to be scaled from this drawing.
 This drawing is copyright and is not to be copied in part or whole without the permission of the Estates Director
 © Loughborough University
 Estates Services



SPACE SUMMARY OF FLOOR W/1..
 Electrical Engineering (EL) = 1996.5m²
 Central Pool (ZZ) = 199.9m²
 Mathematics (MA) = 441.7m²
 Physics (PH) = 456.5m²
 Chemical Engineering (CG) = 30.2m²
 Aeronautical & Automotive Eng. (TT) = 184.8m²
 Faculty of Engineering (S1) = 306.2m²

 TOTAL USABLE AREA = 3615.8m²
 TOTAL GROSS AREA = 4795.9m²



FLOOR W/1.. (Rooms prefixed W.1.)

NOTE - XREF WBUILDING LOADED INTO THIS DRAWING CM 20.6.06

Loughborough University
 ESTATES SERVICES
 LOUGHBOROUGH LEICS TEL 263171

PROJECT
 Sir David Davies
 Floors W/1..

DRAWING
 Estates Record Drawing

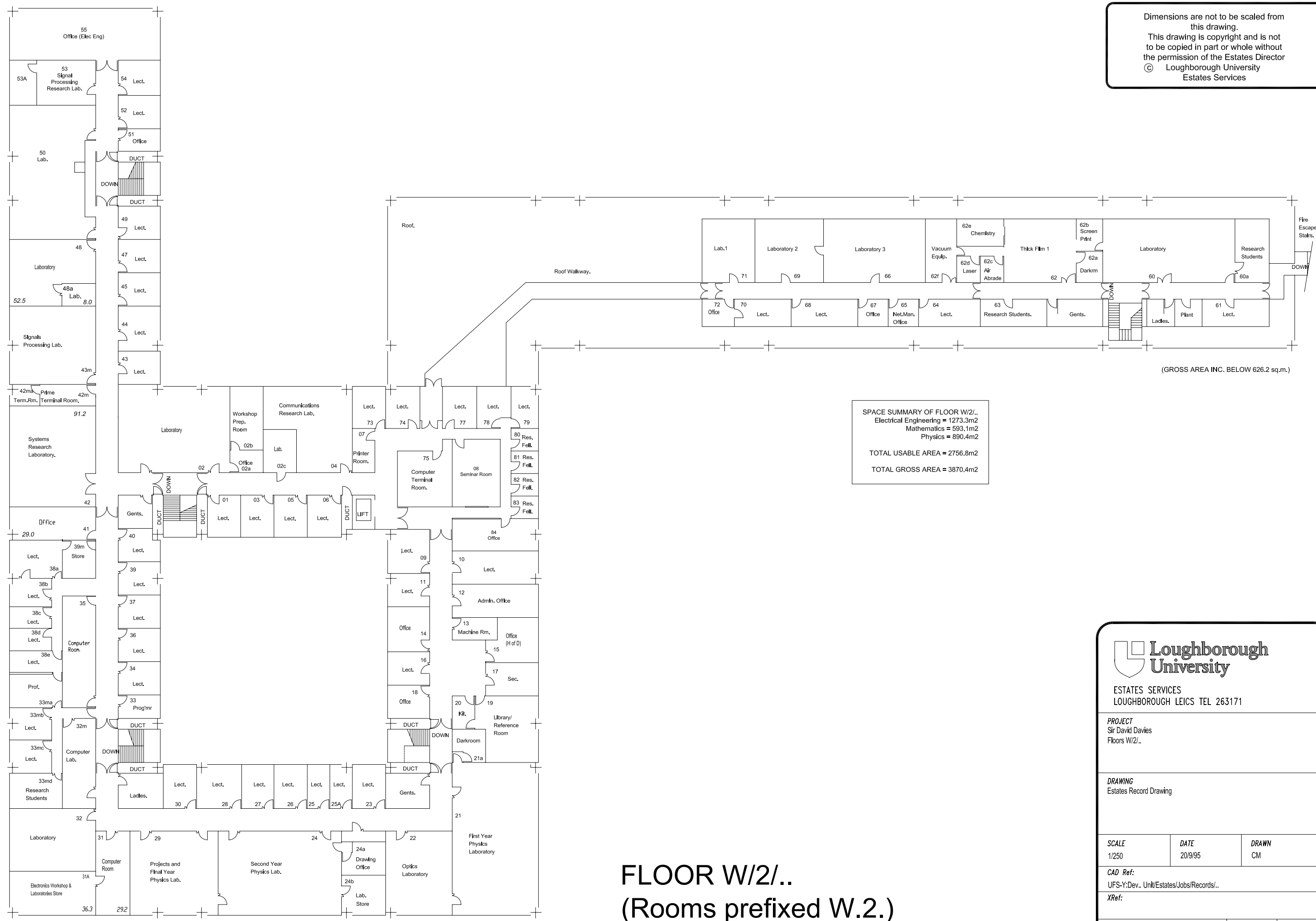
SCALE 1/250	DATE 30/10/95	DRAWN CM
----------------	------------------	-------------

CAD Ref:
 UFS-Y:Dev.. Unit/Estates/Jobs/Records/..

XRef:

DRAWING No. 10A	REV 13/11/06	DWG. SIZE A2
--------------------	-----------------	-----------------

Dimensions are not to be scaled from this drawing.
 This drawing is copyright and is not to be copied in part or whole without the permission of the Estates Director
 © Loughborough University
 Estates Services



SPACE SUMMARY OF FLOOR W/2/..
 Electrical Engineering = 1273.3m²
 Mathematics = 593.1m²
 Physics = 890.4m²
 TOTAL USABLE AREA = 2756.8m²
 TOTAL GROSS AREA = 3870.4m²

(GROSS AREA INC. BELOW 626.2 sq.m.)

FLOOR W/2/.. (Rooms prefixed W.2.)

Loughborough University
 ESTATES SERVICES
 LOUGHBOROUGH LEICS TEL 263171

PROJECT
 Sir David Davies
 Floors W/2/..

DRAWING
 Estates Record Drawing

SCALE 1/250	DATE 20/9/95	DRAWN CM
----------------	-----------------	-------------

CAD Ref:
 UFS-Y:Dev.. Unit/Estates/Jobs/Records/..

XRef:

DRAWING No. 10B	REV 10/2/03	DWG. SIZE A2
--------------------	----------------	-----------------